

BESSON[®]



BESSON®

BES LTD ŞTİ. 1991 YILINDA KURULMUS OLUP, 1996 YILINDAN BERİ ELMASLI SONDAJ VE MALZEMELERİNDE FAALİYET GÖSTERMEKTEDİR. ELMASLI SONDAJ MALZEMELERİ KULEDE SU BAŞLIĞINDAN BAŞLAYARAK KUYU DİBİNDE MATKABA KADAR ULAŞAN TİJ, KAROTİYER, VİDYELİ VEYA ELMASLI PORTKRON İLE VİDYE VEYA ELMAS MATKAPLARDA OLUŞAN TAKIM DİZİSİ GEREKTİĞİNDE KUYUNUN VE BU DİZİNİN KORUNMASINI SAĞLAYAN MUHAFAZA BORULARININ TAMAMI İVEDİK O.S.B. BULUNAN TESİSİMİZDE ÜRETİLMEKTEDİR.

BES LTD. ŞTİ.'NİN, BAŞARILI OLMASININ TEMELİNDE TALEPLERİN DOĞRU TESPİTİ VE DÜNYADAKİ GELİŞMELERİN YAKINDAN TAKİP EDİLMESİ YATMAKTADIR. YASALLIK, TOPLUMSAL FAYDA VE AHLAK İLKELERİNE UYGUNLUK, DOĞAYA SAYGI, EKİP ANLAYIŞI, KALİTE VE DEĞERLERİNİ OLUŞTURMAKTADIR.

BES LTD. ŞTİ, İLERLEMENİN, İŞİNİ SEVMEK VE HER AYRINTIYI ÖNEMSEMekten GEÇTİĞİNE İNANIR.

BES LTD. CO. WAS ESTABLISHED IN 1991 AND HAS BEEN OPERATING ON MANUFACTURING DIAMOND DRILLING EQUIPMENTS SINCE 1996. IN-THE-HOLE EQUIPMENTS, FROM WATER SWIVEL TO DIAMOND BIT, WITH CASINGS AND RECOVERY TOOLS OF BOTH WIRELINE AND DCDMA STANDARTS ARE MANUFACTURED UNDER THE BRAND NAME "BESSON" IN BES LTD. CO'S FACILITIES AT İVEDİK OSB, ANKARA.

SUCCESS OF BES LTD. CO. DEPENDS ON IDENTIFYING AND MEETING THE DEMANDS OF THE MARKET BY FOLLOWING TECHNOLOGICAL ADVANCEMENT IN THE WORLD.

KAROTİYERLER/CORE BARRELS

WIRELIME KAROTİYERLER

BESSON WIRELINE KAROTİYERLERİ ELMASLI SONDAJ DELGİLERİNDE YAYGIN OLARAK KULLANILAN WIRELINE SİSTEMLERLE UYUMLU ÇALIŞACAK ŞEKİLDE, DÜNYADA BİLİNEBİLİR VE KENDİNİ KANITLAMIS BORU İMALAT FABRİKALARINDAN TEMİN EDİLEN KAROTİYER TÜPLERİ VE HER AŞAMASINDA KONTROL EDİLEREK İMAL EDİLEN KAROTİYER BAŞLIK GRUBU KULLANILARAK YÜKSEK KALİTE VE VERİMLİLİĞİ SAĞLAYACAK ŞEKİLDE HAZIRLANMAKTADIR.

WIRELNE CORE BARRELS

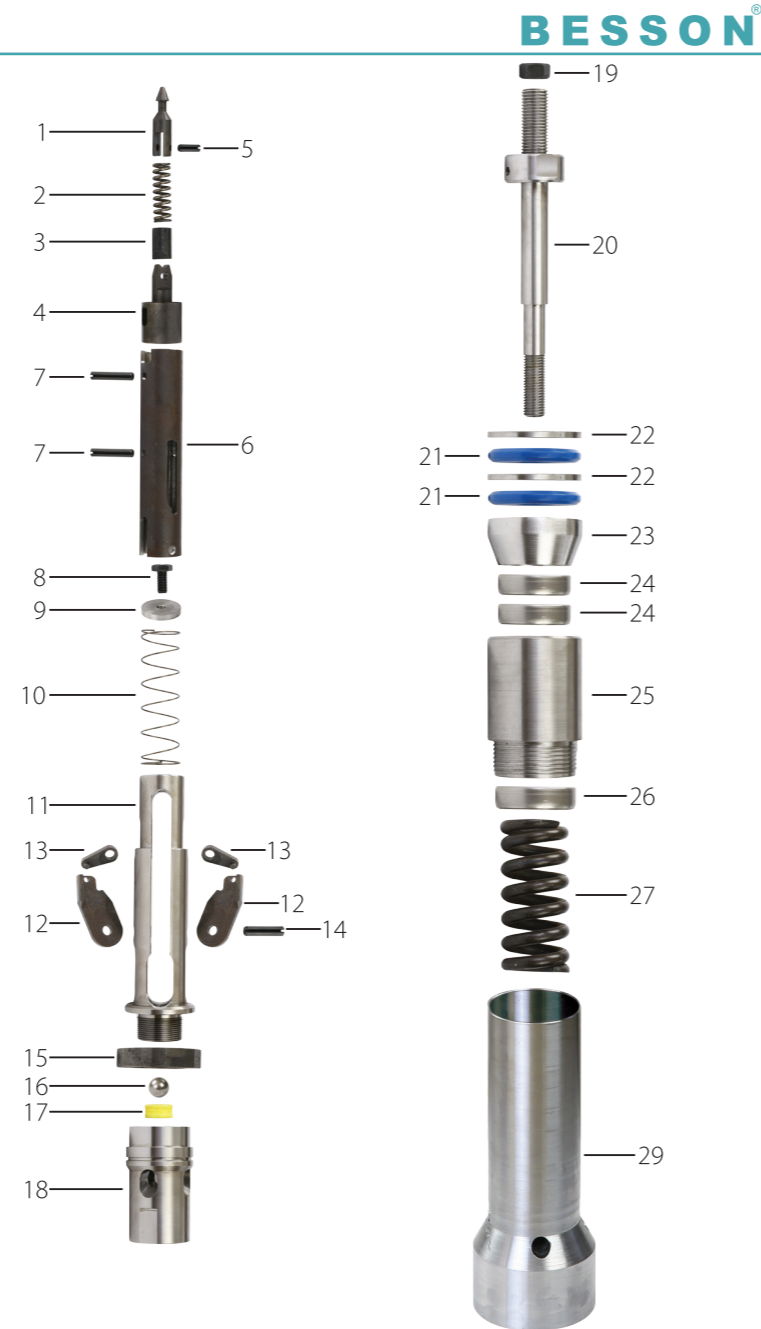
BESSON WIRELINE CORE BARRELS, COMPATIBLE WITH WIDELY USED WIRELINE SYSTEMS, ARE MANUFACTURED BY USING TUBES PURCHASED FROM WORLDWIDE KNOWN TUBE MANUFACTURER COMPANIES AND CORE BARREL HEAD ASSAYS WHICH ARE CONTROLLED IN EACH STEP IN PRODUCTION LINE FOR OBTAINING HIGHEST QUALITY AND EFFICIENCY.



KAROTİYERLER/CORE BARRELS

P-WL KAROTİYER BAŞLIĞI/P-WL HEAD ASSEMBLY

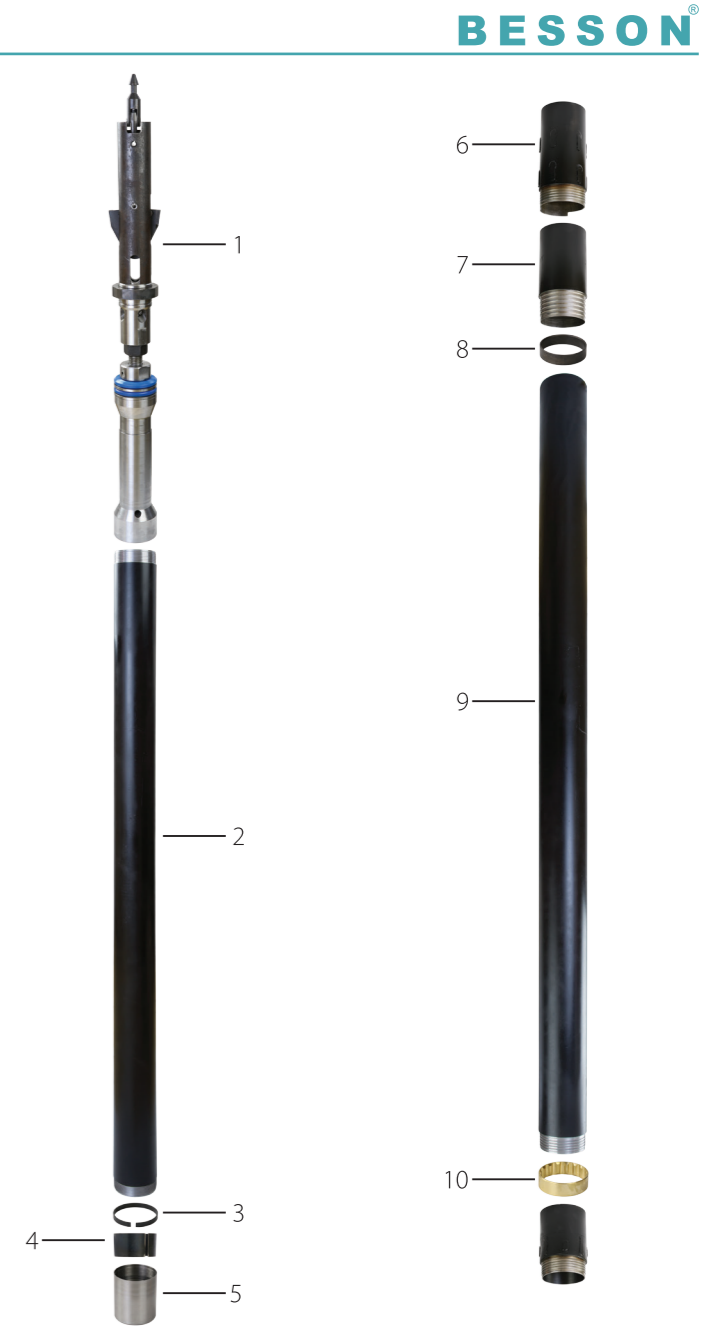
NO	BESSON KODU	AÇIKLAMA	DESCRIPTION
1	470227	ÇAMBAŞI	SPEARHEAD POINT
2	470209	ÇAMBAŞI YAYI	COMPRESSION SPRING
3	470335	DALDIRMA KOLU	DETENT PLUNGER
4	470223	ÇAMBAŞI TABANI	SPEARHEAD BASE
5	470022	ÇAMBAŞI PİMİ	SPIROL PIN
6	470264	BAŞLIK MUHAFAZASI	LATCH RETRACTING CASE
7	470276	BAŞLIK PİMİ	SPIROL PIN
8	470387	3/8 PİM	NYLOC BOLT 3/8
9	470267	BAŞLIK MANDAL BASKI PULU	WASHER
10	470269	BAŞLIK MANDAL BASKI YAYI	LATCH COMPRESSION SPRING
11	470284	BAŞLIK ÜST GÖVDE	UPPER LATCH BODY
12	770635	MANDAL	LATCH
13	770637	MAFSAL	LINK
14	470676	MANDAL PİMİ	SPRING PIN
15	470226	BAŞLIK DURDURMA HALKASI	LANDING SHOULDER
16	470294	ÇELİK BİLYA 22 MM*	STAINLESS STEEL BALL 22 MM*
17	470234	BİLYA YATAĞI	LANDING INDICATOR BUSHING
18	470224	BAŞLIK ALT GÖVDE	LOWER LATCH BODY
19	472227	BAŞLIK AYAR SOMUNU	HEX NUT
20	470026	BAŞLIK MİLİ*	SPINDLE*
21	770222	BAŞLIK CONTA	SHUT-OFF VALVE
22	770027	BAŞLIK PULU	VALVE ADJUSTING BUSHER
23	770765	RULMAN MUHAFAZASI,KONİK	WASHER
24	470097	ZARFLI RULMAN	THRUST BEARING
25	770069	ZARFLI RULMAN	SPINDLE BEARING
26	770097	ZARFLI RULMAN	HANGER BEARING
27	470229	BAŞLIK BASKI YAYI	COMPRESSION SPRING
28	470057	KİLİTLEME SOMUNU	STOVER LOCK NUT
29	474825	İÇ TÜP BAĞLANTISI (KOMPLE)	INNER TUBE CAP ASSEMBLY



KAROTİYERLER/CORE BARRELS

P-WL KOMPLE KAROTİYER/P-WL CORE BARREL

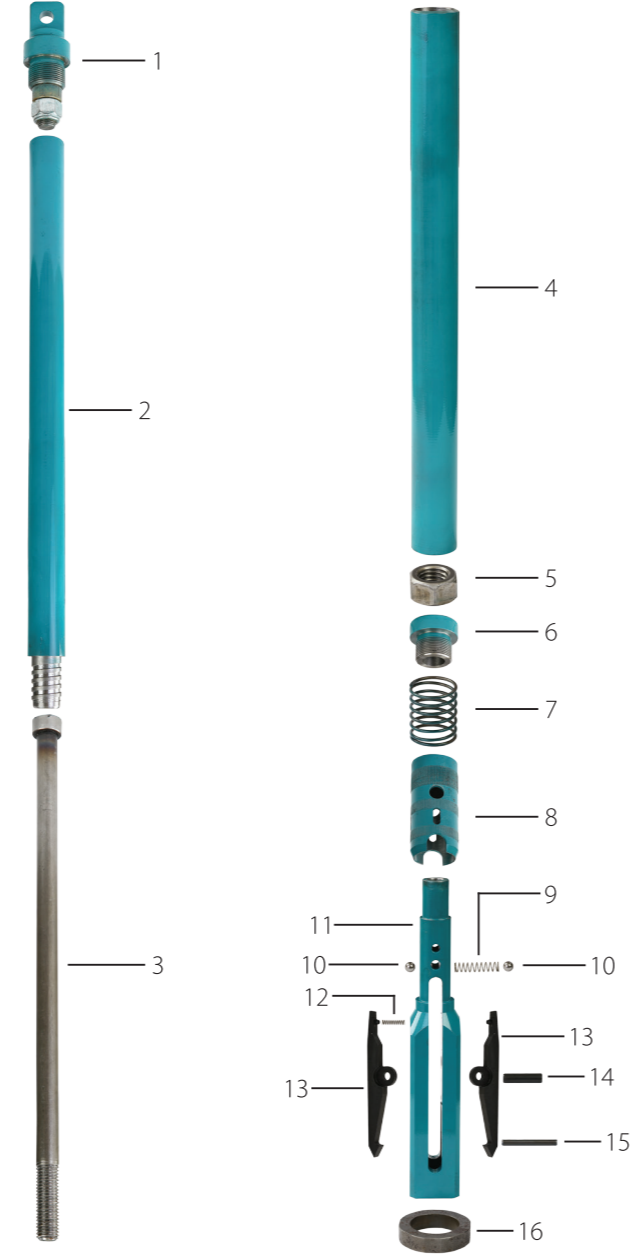
NO	BESSON KODU	AÇIKLAMA	DESCRIPTION
1	770482	İÇ TÜP BAŞLIĞI	HEAD ASSEMBLY
2	774836	İÇ TÜP 3 M	INNER TUBE 3 M
2	774826	İÇ TÜP 1.5 M	INNER TUBE 1.5 M
3	774797	SEGMAN YUVASI RİNGİ	STOP RING
4	770007	SEGMAN	CORE LIFTER
5	770079	SEGMAN YUVASI	CORE LIFTER CASE
6	770009	ZIRH	LOCKING COUPLING
7	770092	ZIRHALTI	ADAPTOR COUPLING
8	770034	DURDURMA HALKASI	LANDING RING
9	773836	DIŞ TÜP 3 M	OUTER TUBE 3 M
9	773826	DIŞ TÜP 1,5	OUTER TUBE 1.5 M
10	770062	MERKEZLEME BİLEZİĞİ	INNER TUBE STABILIZER



KAROTİYERLER/CORE BARRELS

P-WL OVERSHOT/P-WL OVERSHOT

NO	BESSON KODU	AÇIKLAMA	DESCRIPTION
1	470438	HALAT BAĞLAMA TAKIMI	EYE BOLT ASSEMBLY
2	476784	UST GOVDE	CABLE SWIVEL BODY
3	476766	OVERSHOT MILI	JAR STAFF
4	476768	OVERSHOT MİL TÜPÜ	JAR TUBE
5	470767	OVERSHOT MİL SOMUNU	HEX NUT
6	470768	KİLİT MEKANİZMA TAPASI	LOCKING CAP
7	476769	KİLİT MEKANİZMA YAYI	LOCKING SPRING
8	476765	KİLİT MEKANİZMA KABI	SLEEVE
9	476722	BİLYA BASKI	COMPRESSION SPRING
10	470002	BİLYA	STEEL BALL
11	476762	OVERSHOT BAŞLIĞI	OVERSHOT HEAD
12	470669	OVERSHOT MANDAL YAYI	COMPRESSION SPRING
13	476676	OVERSHOT MANDAL	LIFTING DOG
14	476767	OVERSHOT MANDAL PİMİ	PLAIN PIN
15	476757	KİLİTLEME PİMİ	LOCKING PIN
16	776735	PQ OVERSHOT DÖNÜŞÜM KİTİ	PQ OVERSHOT HEAD SLEEVE

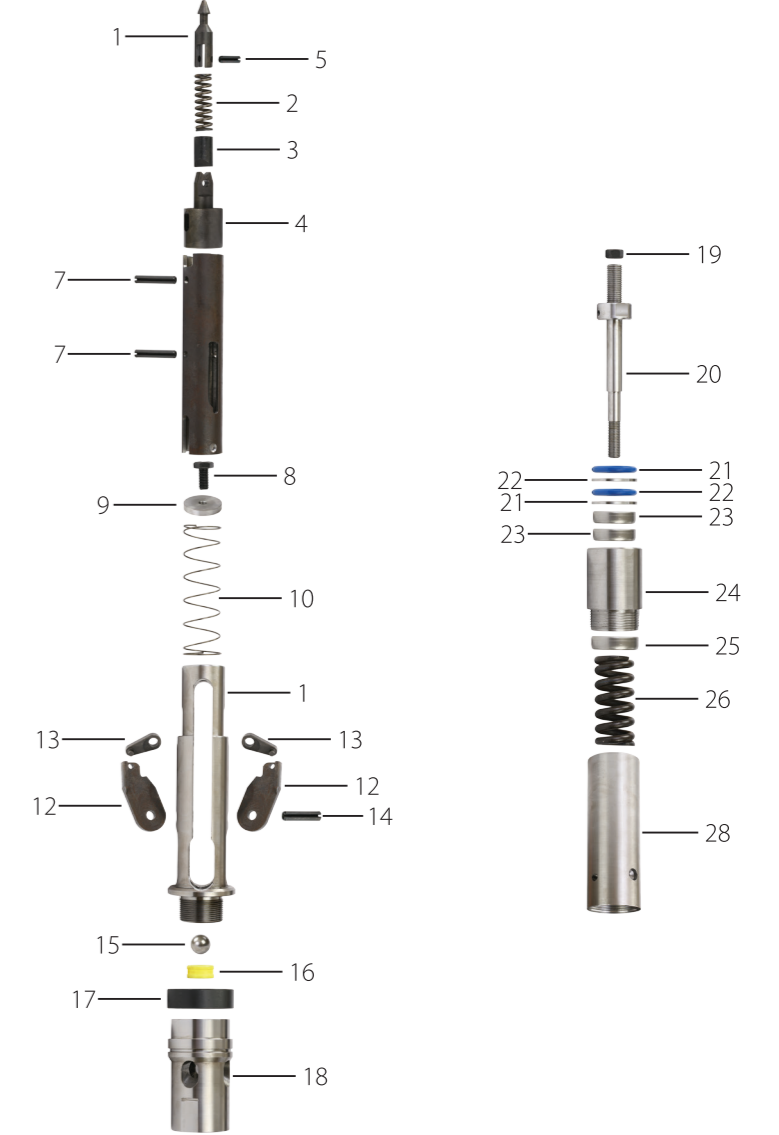


BESSON®

KAROTİYERLER/CORE BARRELS

H-WL KAROTİYER BAŞLIĞI/H-WL HEAD ASSEMBLY

NO	BESSON KODU	AÇIKLAMA	DESCRIPTION
1	470227	ÇAMBAŞI	SPEARHEAD POINT
2	470209	ÇAMBAŞI YAYI	COMPRESSION SPRING
3	470335	DALDIRMA KOLU	DETENT PLUNGER
4	470223	ÇAMBAŞI TABANI	SPEARHEAD BASE
5	470022	ÇAMBAŞI PİMİ	SPIROL PIN
6	470264	BAŞLIK MUHAFAZASI	LATCH RETACTING CASE
7	470276	BAŞLIK PİMİ	SPIROL PIN
8	470387	3/8 PİM	NYLOC BOLT 3/8
9	470267	BAŞLIK MANDAL BASKI PULU	WASHER
10	470269	BAŞLIK MANDAL BASKI YAYI	LATCH COMPRESSION SPRING
11	470284	BAŞLIK ÜST GÖVDE	UPPER LATCH BODY
12	470635	MANDAL	LATCH
13	470637	MAFSAL	LINK
14	470676	MANDAL PİMİ	SPRING PIN
15	470226	ÇELİK BİLYA 22 MM	STAINLESS STEEL BALL 22 MM
16	470294	BİLYA YATAĞI	LANDING INDICATOR BUSHING
17	470234	BAŞLIK DURDURMA HALKASI	LANDING SHOULDER
18	470224	BAŞLIK ALT GÖVDE	LOWER LATCH BODY
19	472227	BAŞLIK AYAR SOMUNU	HEX NUT
20	470026	BAŞLIK MİLİ	SPINDLE
21	470222	BAŞLIK CONTA	SHUT-OFF VALVE
22	470027	BAŞLIK PULU	VALVE ADJUSTING BUSHER
23	470097	ZARFLI RULMAN	THRUST BEARING
24	470076	BAŞLIK MİL YATAĞI	SPINDLE BEARING
25	470098	ZARFLI RULMAN	HANGER BEARING
26	470229	BAŞLIK BASKI YAYI	COMPRESSION SPRING
27	470057	KİLİTLEME SOMUNU	STOVER LOCK NUT
28	474825	İÇ TÜP BAĞLANTISI (KOMPLE)	INNER TUBE CAP ASSEMBLY



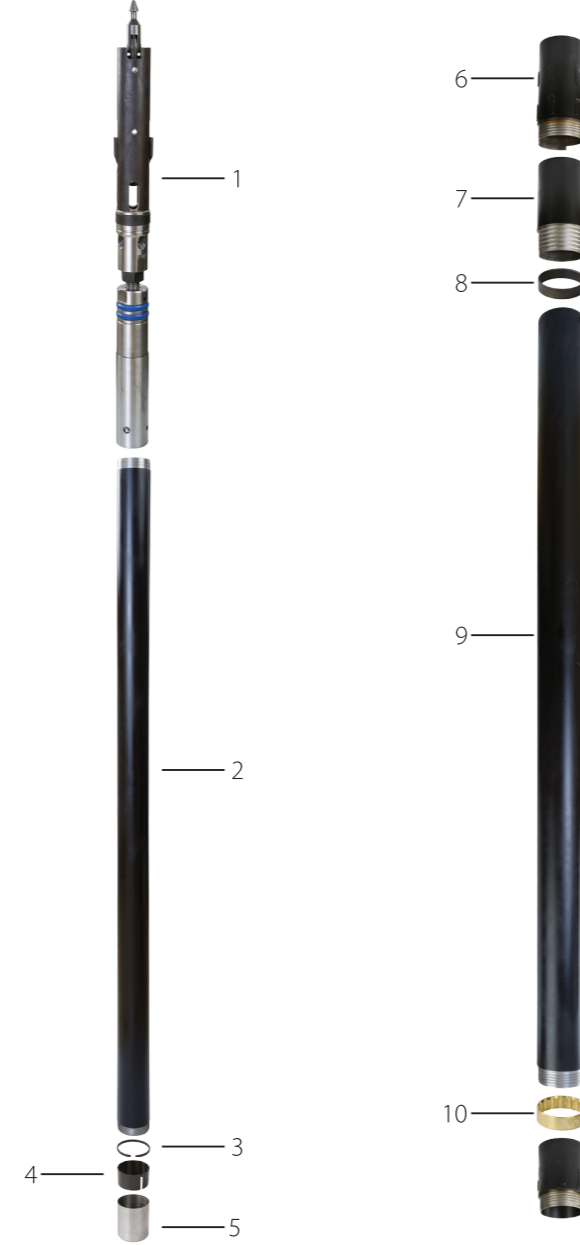
BESSON®

KAROTİYERLER/CORE BARRELS

H-WL KOMPLE KAROTİYER/H-WL CORE BARREL

BESSON®

NO	BESSON KODU	AÇIKLAMA	DESCRIPTION
1	470482	İÇ TÜP BAŞLIĞI	HEAD ASSEMBLY
2	474836	İÇ TÜP 3 M	INNER TUBE 3 M
2	474826	İÇ TÜP 1.5 M	INNER TUBE 1.5 M
3	474797	SEGMAN YUVASI RİNGİ	STOP RING
4	470007	SEGMAN	CORE LIFTER
5	470079	SEGMAN YUVASI	CORE LIFTER CASE
6	470009	ZIRH	LOCKING COUPLING
7	470092	ZIRHALTI	ADAPTOR COUPLING
8	470034	DURDURMA HALKASI	LANDING RING
9	473836	DIŞ TÜP 3 M	OUTER TUBE 3 M
9	473826	DIŞ TÜP 1,5	OUTER TUBE 1.5 M
10	470062	MERKEZLEME BİLEZİĞİ	INNER TUBE STABILIZER

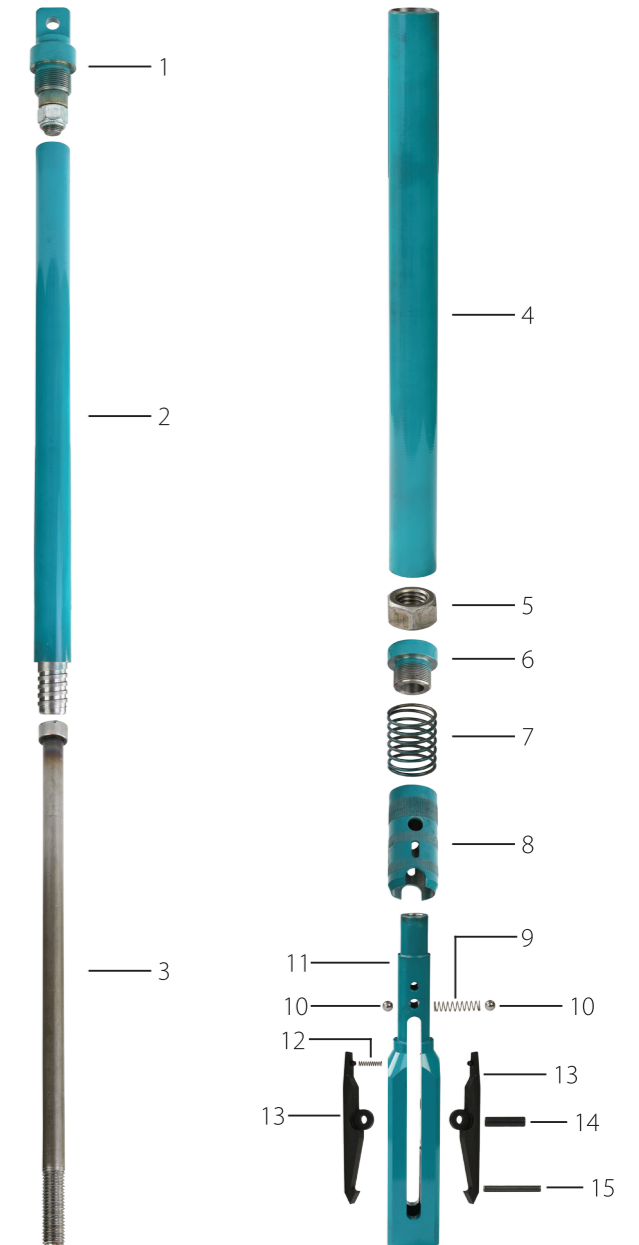


KAROTİYERLER/CORE BARRELS

H-WL OVERSHOT/H-WL OVERSHOT

BESSON®

NO	BESSON KODU	AÇIKLAMA	DESCRIPTION
1	470438	HALAT BAĞLAMA TAKIMI	EYE BOLT ASSEMBLY
2	476784	UST GOVDE	CABLE SWIVEL BODY
3	476766	OVERSHOT MILI	JAR STAFF
4	476768	OVERSHOT MİL TÜPÜ	JAR TUBE
5	470767	OVERSHOT MİL SOMUNU	HEX NUT
6	470768	KİLİT MEKANİZMA TAPASI	LOCKING CAP
7	476769	KİLİT MEKANİZMA YAYI	LOCKING SPRING
8	476765	KİLİT MEKANİZMA KABI	SLEEVE
9	476722	BİLYA BASKI	COMPRESSION SPRING
10	470002	BİLYA	STEEL BALL
11	476762	OVERSHOT BAŞLIĞI	OVERSHOT HEAD
12	470669	OVERSHOT MANDAL YAYI	COMPRESSION SPRING
13	476676	OVERSHOT MANDAL	LIFTING DOG
14	476767	OVERSHOT MANDAL PİMİ	PLAIN PIN
15	476757	KİLİTLEME PİMİ	LOCKING PIN

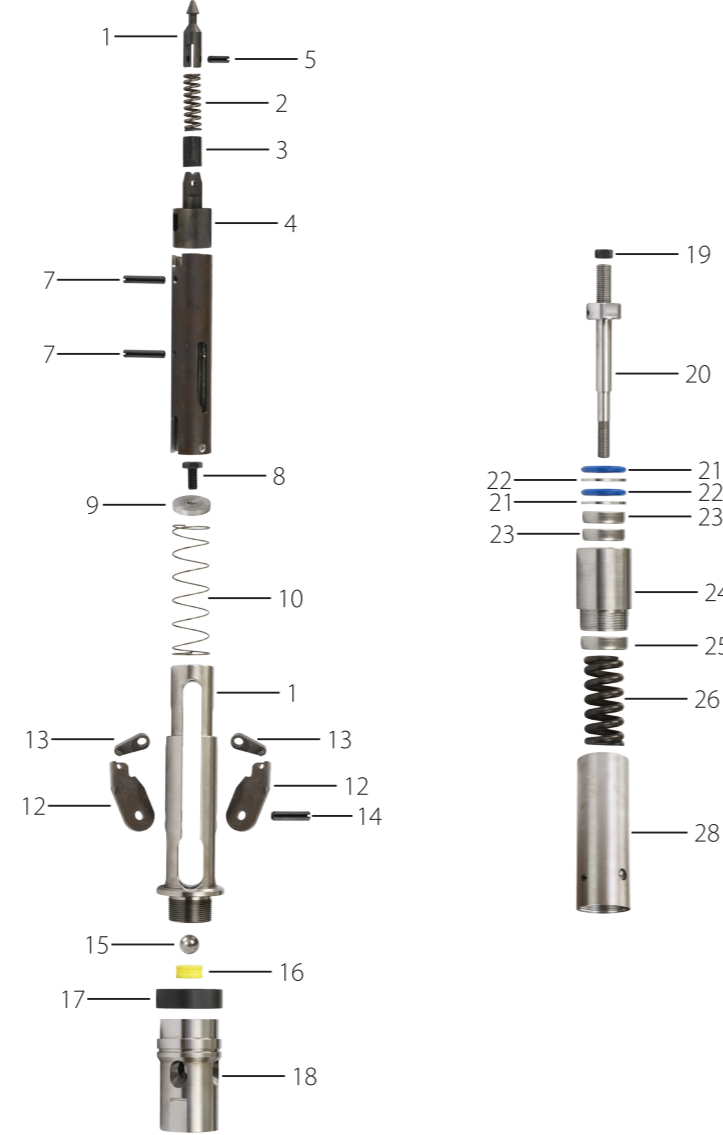


KAROTİYERLER/CORE BARRELS

BESSON®

N-WL KAROTİYER BAŞLIĞI/N-WL HEAD ASSEMBLY

NO	BESSON KODU	AÇIKLAMA	DESCRIPTION
1	670227	ÇAMBAŞI	SPEARHEAD POINT
2	670209	ÇAMBAŞI YAYI	COMPRESSION SPRING
3	670335	DALDIRMA KOLU	DETENT PLUNGER
4	670223	ÇAMBAŞI TABANI	SPEARHEAD BASE
5	670022	ÇAMBAŞI PİMİ	SPIROL PIN
6	670264	BAŞLIK MUHAFAZASI	LATCH RETRACTING CASE
7	670276	BAŞLIK PİMİ	SPIROL PIN
8	670387	3/8 PİM	NYLOC BOLT 3/8
9	670267	BAŞLIK MANDAL BASKI PULU	WASHER
10	670269	BAŞLIK MANDAL BASKI YAYI	LATCH COMPRESSION SPRING
11	670284	BAŞLIK ÜST GÖVDE	UPPER LATCH BODY
12	670635	MANDAL	LATCH
13	670637	MAFSAL	LINK
14	670676	MANDAL PİMİ	SPRING PIN
15	670226	ÇELİK BİLYA 22 MM	STAINLESS STEEL BALL 22 MM
16	670294	BİLYA YATAĞI	LANDING INDICATOR BUSHING
17	670234	BAŞLIK DURDURMA HALKASI	LANDING SHOULDER
18	670224	BAŞLIK ALT GÖVDE	LOWER LATCH BODY
19	672227	BAŞLIK AYAR SOMUNU	HEX NUT
20	670026	BAŞLIK MİLİ	SPINDLE
21	670222	BAŞLIK CONTA	SHUT-OFF VALVE
22	670027	BAŞLIK PULU	VALVE ADJUSTING BUSER
23	670097	ZARFLI RULMAN	THRUST BEARING
24	670076	BAŞLIK MİL YATAĞI	SPINDLE BEARING
25	670098	ZARFLI RULMAN	HANGER BEARING
26	670229	BAŞLIK BASKI YAYI	COMPRESSION SPRING
27	670057	KİLİTLEME SOMUNU	STOVER LOCK NUT
28	674825	İÇ TÜP BAĞLANTISI (KOMPLE)	INNER TUBE CAP ASSEMBLY

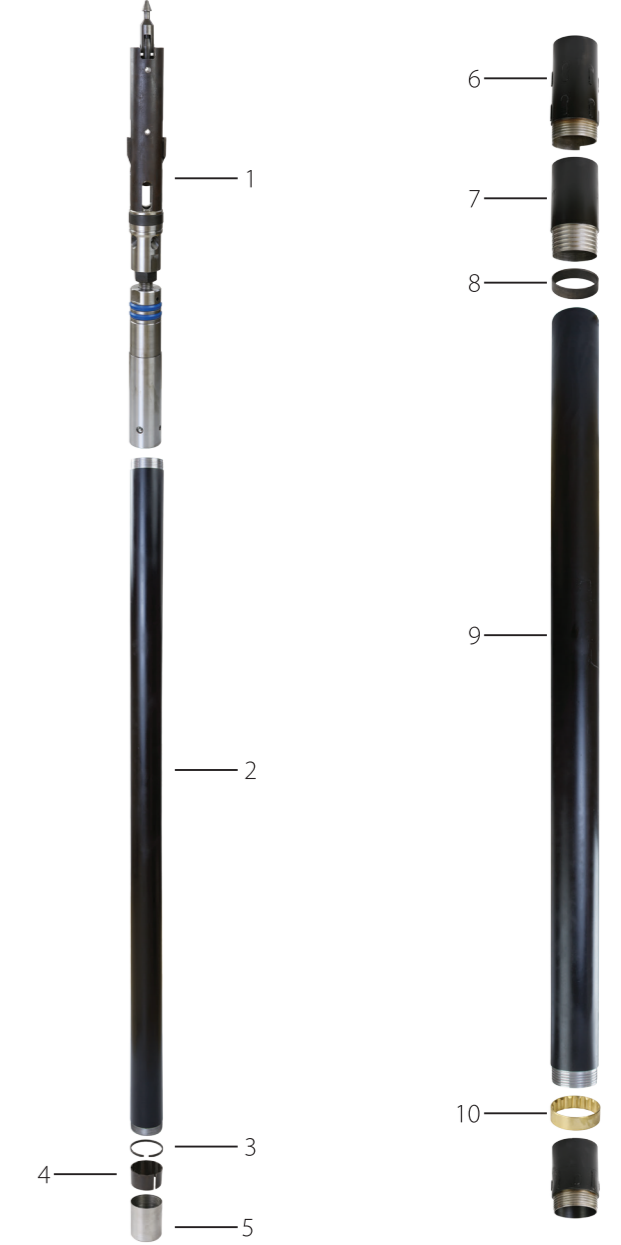


KAROTİYERLER/CORE BARRELS

BESSON®

N-WL KOMPLE KAROTİYER/N-WL CORE BARREL

NO	BESSON KODU	AÇIKLAMA	DESCRIPTION
1	670482	İÇ TÜP BAŞLIĞI	HEAD ASSEMBLY
2	674836	İÇ TÜP 3 M	INNER TUBE 3 M
2	674826	İÇ TÜP 1.5 M	INNER TUBE 1.5 M
3	674797	SEGMAN YUVASI RİNGİ	STOP RING
4	670007	SEGMAN	CORE LIFTER
5	670079	SEGMAN YUVASI	CORE LIFTER CASE
6	670009	ZIRH	LOCKING COUPLING
7	670092	ZIRHALTI	ADAPTOR COUPLING
8	670034	DURDURMA HALKASI	LANDING RING
9	673836	DIŞ TÜP 3 M	OUTER TUBE 3 M
9	673826	DIŞ TÜP 1,5	OUTER TUBE 1.5 M
10	670062	MERKEZLEME BİLEZİĞİ	INNER TUBE STABILIZER

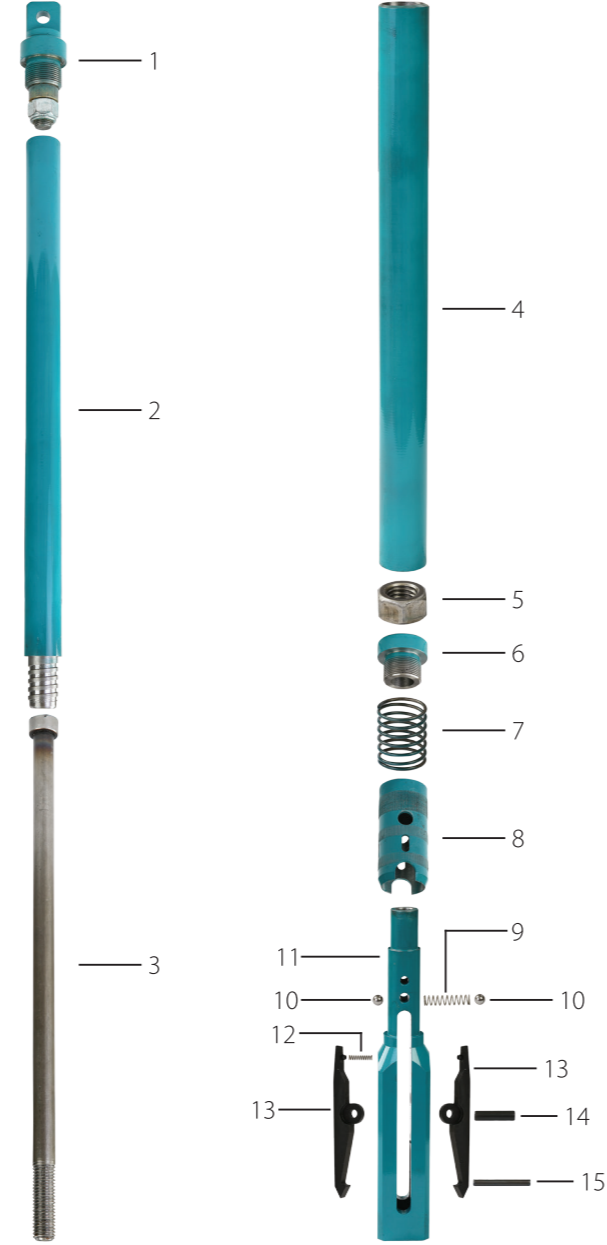


KAROTİYERLER/CORE BARRELS

BESSON®

N-WL OVERSHOT/N-WL OVERSHOT

NO	BESSON KODU	AÇIKLAMA	DESCRIPTION
1	670438	HALAT BAĞLAMA TAKIMI	EYE BOLT ASSEMBLY
2	676784	UST GOVDE	CABLE SWIVEL BODY
3	676766	OVERSHOT MILI	JAR STAFF
4	676768	OVERSHOT MİL TÜPÜ	JAR TUBE
5	670767	OVERSHOT MİL SOMUNU	HEX NUT
6	670768	KİLİT MEKANİZMA TAPASI	LOCKING CAP
7	676769	KİLİT MEKANİZMA YAYI	LOCKING SPRING
8	676765	KİLİT MEKANİZMA KABI	SLEEVE
9	676722	BİLYA BASKI	COMPRESSION SPRING
10	670002	BİLYA	STEEL BALL
11	676762	OVERSHOT BAŞLIĞI	OVERSHOT HEAD
12	670669	OVERSHOT MANDAL YAYI	COMPRESSION SPRING
13	676676	OVERSHOT MANDAL	LIFTING DOG
14	676767	OVERSHOT MANDAL PİMİ	PLAIN PIN
15	676757	KİLİTLEME PİMİ	LOCKING PIN

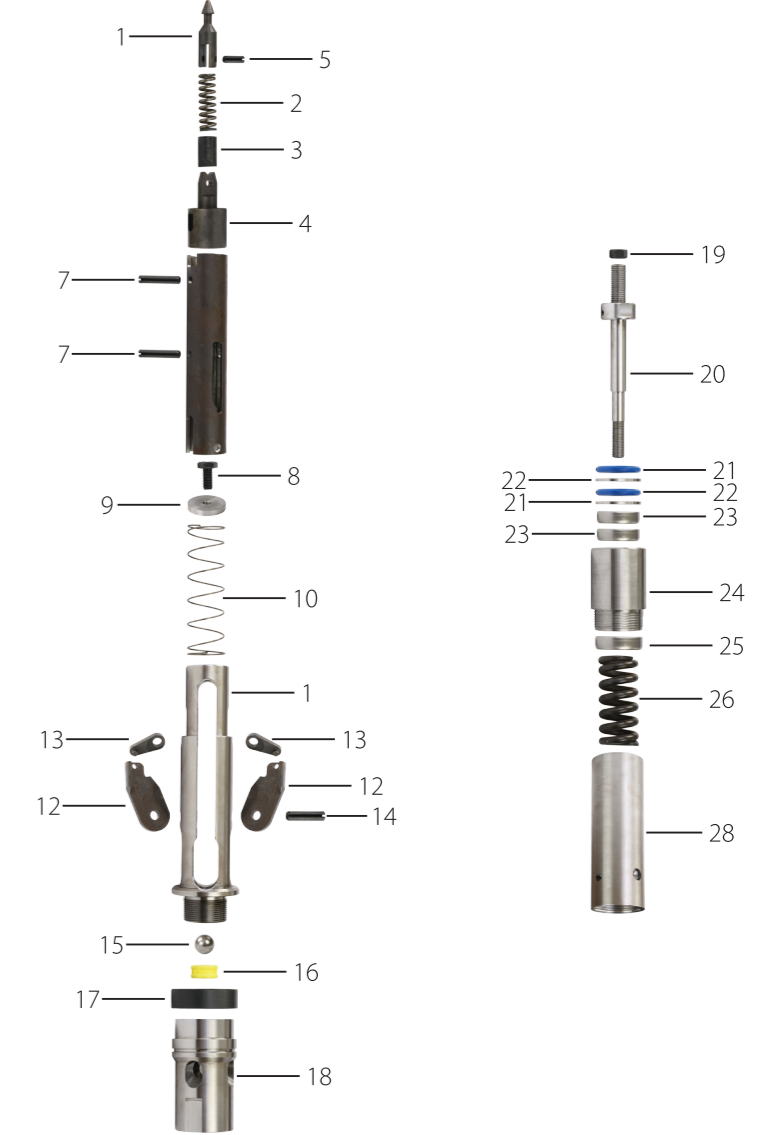


KAROTİYERLER/CORE BARRELS

BESSON®

B-WL KAROTİYER BAŞLIĞI/B-WL HEAD ASSEMBLY

NO	BESSON KODU	AÇIKLAMA	DESCRIPTION
1	270227	ÇAMBAŞI	SPEARHEAD POINT
2	270209	ÇAMBAŞI YAYI	COMPRESSION SPRING
3	270335	DALDIRMA KOLU	DETENT PLUNGER
4	270223	ÇAMBAŞI TABANI	SPEARHEAD BASE
5	270022	ÇAMBAŞI PİMİ	SPIROL PIN
6	270264	BAŞLIK MUHAFAZASI	LATCH RETACTING CASE
7	270276	BAŞLIK PİMİ	SPIROL PIN
8	270387	3/8 PİM	NYLOC BOLT 3/8
9	270267	BAŞLIK MANDAL BASKI PULU	WASHER
10	270269	BAŞLIK MANDAL BASKI YAYI	LATCH COMPRESSION SPRING
11	270284	BAŞLIK ÜST GÖVDE	UPPER LATCH BODY
12	270635	MANDAL	LATCH
13	270637	MAFSAL	LINK
14	270676	MANDAL PİMİ	SPRING PIN
15	270226	ÇELİK BİLYA 22 MM	STAINLESS STEEL BALL 22 MM
16	270294	BİLYA YATAĞI	LANDING INDICATOR BUSHING
17	270234	BAŞLIK DURDURMA HALKASI	LANDING SHOULDER
18	270224	BAŞLIK ALT GÖVDE	LOWER LATCH BODY
19	272227	BAŞLIK AYAR SOMUNU	HEX NUT
20	270026	BAŞLIK MİLİ	SPINDLE
21	270222	BAŞLIK CONTA	SHUT-OFF VALVE
22	270027	BAŞLIK PULU	VALVE ADJUSTING BUSHER
23	270097	ZARFLI RULMAN	THRUST BEARING
24	270076	BAŞLIK MİL YATAĞI	SPINDLE BEARING
25	270098	ZARFLI RULMAN	HANGER BEARING
26	270229	BAŞLIK BASKI YAYI	COMPRESSION SPRING
27	270057	KİLİTLEME SOMUNU	STOVER LOCK NUT
28	274825	İÇ TÜP BAĞLANTISI (KOMPLE)	INNER TUBE CAP ASSEMBLY

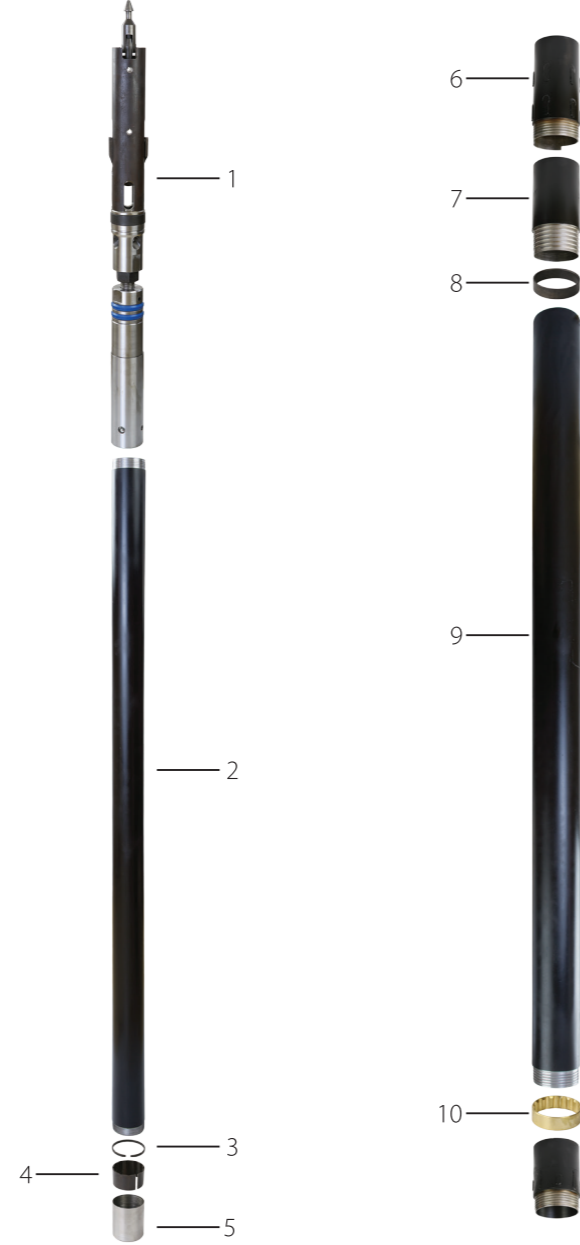


KAROTİYERLER/CORE BARRELS

BESSON®

B-WL KOMPLE KAROTİYER/B-WL CORE BARREL

NO	BESSON KODU	AÇIKLAMA	DESCRIPTION
1	270482	İÇ TÜP BAŞLIĞI	HEAD ASSEMBLY
2	274836	İÇ TÜP 3 M	INNER TUBE 3 M
2	274826	İÇ TÜP 1.5 M	INNER TUBE 1.5 M
3	274797	SEGMAN YUVASI RİNGİ	STOP RING
4	270007	SEGMAN	CORE LIFTER
5	270079	SEGMAN YUVASI	CORE LIFTER CASE
6	270009	ZIRH	LOCKING COUPLING
7	270092	ZIRHALTI	ADAPTOR COUPLING
8	270034	DURDURMA HALKASI	LANDING RING
9	273836	DIŞ TÜP 3 M	OUTER TUBE 3 M
9	273826	DIŞ TÜP 1,5	OUTER TUBE 1.5 M
10	270062	MERKEZLEME BİLEZİĞİ	INNER TUBE STABILIZER

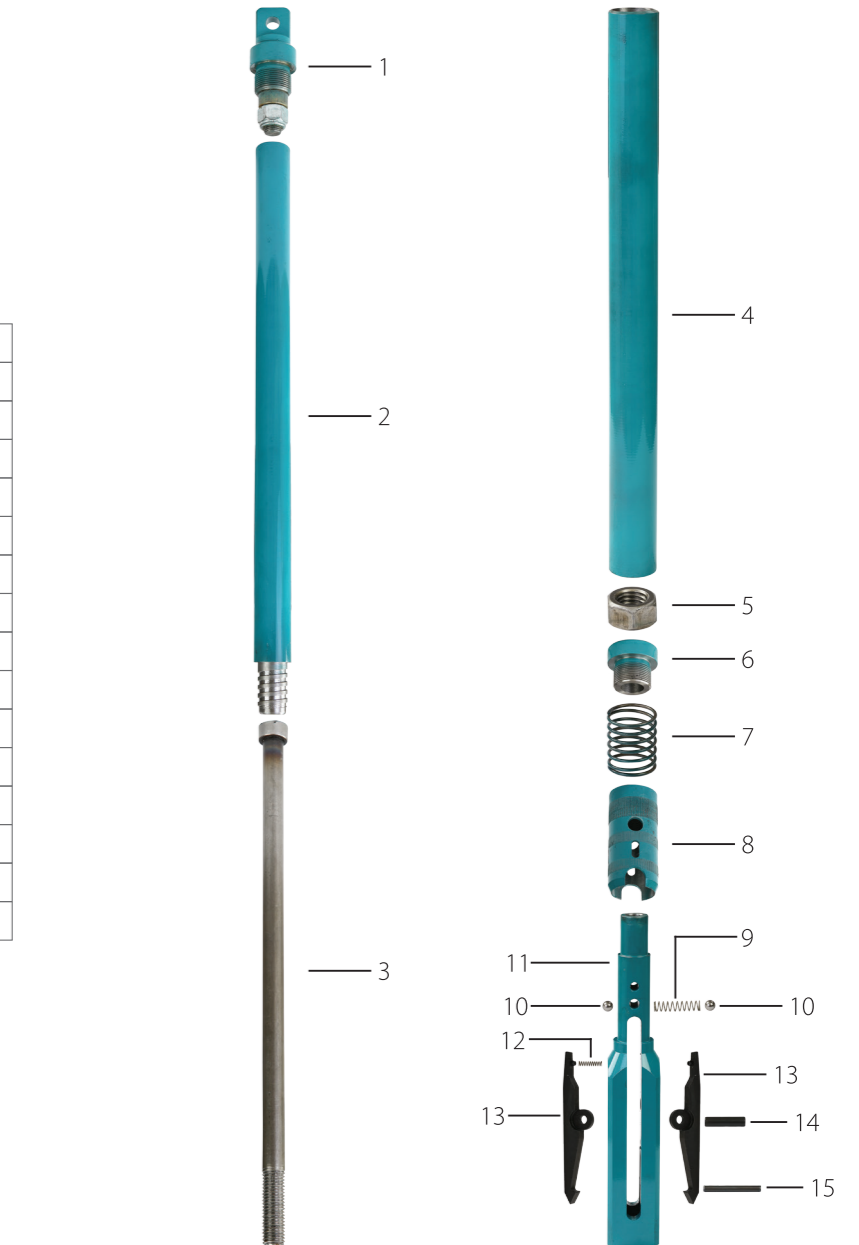


KAROTİYERLER/CORE BARRELS

BESSON®

B-WL OVERSHOT/B-WL OVERSHOT

NO	BESSON KODU	AÇIKLAMA	DESCRIPTION
1	270438	HALAT BAĞLAMA TAKIMI	EYE BOLT ASSEMBLY
2	276784	UST GOVDE	CABLE SWIVEL BODY
3	276766	OVERSHOT MILI	JAR STAFF
4	276768	OVERSHOT MİL TÜPÜ	JAR TUBE
5	270767	OVERSHOT MİL SOMUNU	HEX NUT
6	270768	KİLİT MEKANİZMA TAPASI	LOCKING CAP
7	276769	KİLİT MEKANİZMA YAYI	LOCKING SPRING
8	276765	KİLİT MEKANİZMA KABI	SLEEVE
9	276722	BİLYA BASKI	COMPRESSION SPRING
10	270002	BİLYA	STEEL BALL
11	276762	OVERSHOT BAŞLIĞI	OVERSHOT HEAD
12	270669	OVERSHOT MANDAL YAYI	COMPRESSION SPRING
13	276676	OVERSHOT MANDAL	LIFTING DOG
14	276767	OVERSHOT MANDAL PİMİ	PLAIN PIN
15	276757	KİLİTLEME PİMİ	LOCKING PIN



KONVANSİYONEL KAROTİYERLER/CONVENTIONAL CORE BARRELS

METRİK KAROTİYERLER SİSTEM-A

BESSON METRİK SİSTEM A KAROTİYERLERİ "A" ÇAPTAN, "H" ÇAPA KADAR ÇİFT VE TEKTÜPLÜ OLMAK ÜZERE ISO 3551-1 STANDARDINA UYACAK ŞEKİLDE İMAL EDİLEN KAROTİYER TÜPLERİ, KAROTİYER BAŞLIKLARI, PORTKRON, SEGMAN VE SEGMAN YUVALARI KULLANILARAK HAZIRLANMAKTADIR.

SYSTEM-A CORE BARREL

BESSON METRIC SYSTEM-A COREBARRELS ARE MANUFACTURED FROM "A" SIZE TO "H" SIZE BY USING CORE BARREL HEADS, TUBES, REAMING SHELLS, CORE LIFTER CASES AND CORE LIFTERS PRODUCED UNDER ISO 3551-1 ISO STANDART.

SİSTEM-A KAROTİYERLER(WG-WM)/SYSTEM-A CORE BARRELS(WG/WM)



NO.	1	2	2	3	3	4	5	6
DESCRIPTION	BAŞLIK	OUTER TUBE 3 M	OUTER TUBE 1.5 M	INNER TUBE 3 M	INNER TUBE 1.5 M	REAMING SHELL	CORE LIFTER CASE	CORE LIFTER
PARÇA TANIMI	HEAD ASSAMBLY	DIŞ TÜP 3 M	DIŞ TÜP 1.5	İÇ TÜP 3 M	İÇ TÜP 1.5 M	PORTKRON	SEGMAN YUVASI	SEGMAN
AWM	296002	296383	296382	296483	296482	296077	296079	296007
BWM	396002	396383	396382	396483	396482	396077	396079	396007
NWM	696002	696383	696382	696483	696482	696077	696079	696007



NO.	1	2	2	3	4
DESCRIPTION	BAŞLIK	TÜP 3 M	TÜP 1.5 M	PORTKRON	SEKMAN
PARÇA TANIMI	HEAD ASSAMBLY	TUBE 3 M	TUBE 1.5 M	REAMING SHELL	CORE LIFTER
AWG	294002	294383	294382	294077	294007
BWG	394002	394383	394382	394077	394007
NWG	694002	694383	694382	694077	694007

MERTİK KAROTİYER SİSTEMLERİ SİSTEM - B

BESSON METRİK SİSTEM-B KAROTİYERLERİ 46 MM ÇAPTAN, 101 MM ÇAPA KADAR ÇİFT VE TEK TÜPLÜ OLMAK ÜZERE ISO 3552-1 STANDARDINA UYACAK ŞEKİLDE İMAL EDİLEN KAROTİYER TÜPLERİ, KAROTİYER BAŞLIKLARI, PORTKRON, SEGMAN, SEGMAN YUVALARI VE UZANTI TÜPLERİ KULLANILARAK HAZIRLANMAKTADIR.

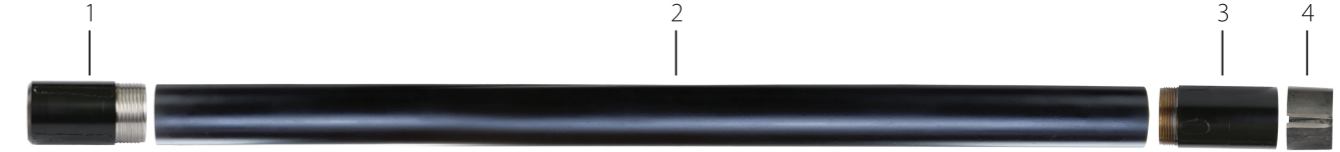
SYSTEM-B CORE BARREL

BESSON METRIC SYSTEM-B COREBARRELS ARE MANUFACTURED FROM 46 MM SIZE TO 101 MM SIZE BY USING CORE BARREL HEADS, TUBES, REAMING SHELLS, CORE LIFTER CASES, CORE LIFTERS AND EXTENSION TUBES PRODUCED ACCORDING TO ISO 3552-1 ISO STANDARD FOR BOTH "T" AND "B" TYPE.

SİSTEM-B KAROTİYERLER(T-B)/SYSTEM-B CORE BARRELS(T/B)



NO.	1	2	2	3	3	4	5	6	7
DESCRIPTION	BAŞLIK	OUTER TUBE 3 M	OUTER TUBE 1.5 M	INNER TUBE 3 M	INNER TUBE 1.5 M	REAMING SHELL	UZANTI TÜPÜ	CORE LIFTER CASE	CORE LIFTER
PARÇA TANIMI	HEAD ASSMBLY	DIŞ TÜP 3 M	DIŞ TÜP 1.5	İÇ TÜP 3 M	İÇ TÜP 1.5 M	PORTKRON	EXTENSION TUBE	SEGMAN YUVASI	SEGMAN
T-46	846002	846383	846382	846483	846482	846077	846087	846007	846079
T-56	856002	856383	856382	856483	856482	856077	856087	856007	856079
T-66	866002	866383	866382	866483	866482	866077	866087	866007	866079
T-76	876002	876383	876382	876483	876482	876077	876087	876007	876079
T-86	886002	886383	886382	886483	886482	886077	886087	886007	886079
T-101	810102	8101383	8101382	8101483	8101482	8101077	8010087	8101007	8101079



NO.	1	2	2	3	4
DESCRIPTION	BAŞLIK	TÜP 3 M	TÜP 1.5 M	PORTKRON	SEKMAN
PARÇA TANIMI	HEAD ASSMBLY	TUBE 3 M	TUBE 1.5	REAMING SHELL	CORE LIFTER
B-46	246002	246383	246382	246077	246007
B-56	256002	256383	256382	256077	256007
B-66	266002	266383	266382	266077	266007
B-76	276002	276383	276382	276077	276007
B-86	286002	286383	286382	286077	286007
B-101	2101002	2101383	2101382	2101077	2101007

WIRELINE TİJLER

BESSON WIRELINE TİJLERİ, ISO 10097-1 STANDARTINA UYGUN ŞEKİLDE, DÜNYADA BİLİNEBİLİR VE KENDİNİ KANITLAMIS BİR BORU ÜRETİM FİRMALARINDAN TEMİN EDİLEN BORULARDAN CNC TORNA MAKİNELERİNDE İMAL EDİLİP, DERİN VE HER TÜRLÜ ZEMİNDE VERİMLİ VE KUYU GÜVENLİĞİNİ SAĞLAMASI AMACIYLA DIŞLARI SERTLEŞTİRİLEREK HİZMETE SUNULMAKTADIR.

BESSON WIRELINE TİJLERİ STOK OLARAK KABUL EDİLMEDEN ÖNCE, DIŞLARI AÇILDIKTAN SONRA VE DIŞ SERTLEŞTİRME OPERASYONUNDAN SONRA OLMAK ÜZERE 3 AŞAMALI BİR KONTROLDEN GEÇMEKTE, AKMA, KOPMA, UZAMA, SERTLİK, DOĞRUSALLIK, AÇILAN DIŞ PROFİLİNİN UYGUNLUĞU VE İNDUKSİYON SERTLİĞİNİN DERİNLİĞİ KONTROL EDİLMEKTE VE TİJ KÜNYESİ OLUŞTURULMAKTADIR.

WIRELINE RODS

BESSON WIRELINE RODS, PROVIDING PRODUCTIVITY AND HIGHEST QUALITY IN DEEP HOLES WITH CHALLENGING FORMATIONS, ARE MANUFACTURED BY OPENING THREADS OF TUBES, PURCHASED FROM WORLD WIDE KNOWN TUBE MANUFACTURER COMPANIES VIA CNC LATHE MACHINES, AND APPLYING HEAT INDUCTION ON THREADS.

BESSON WIRELINE RODS ARE FACED WITH 3-STEP CONTROL, BEFORE TAKING INTO PRODUCTION LINE, AFTER OPENING THREADS AND AFTER HEAT INDUCTION IN ORDER TO CHECK RODS' MECHANICAL PROPERTIES, THREAD PROFILES AND DEPTH OF HEAT INDUCTION ENDING WITH IMPRINT CREATION OF RODS IN ORDER TO PROVIDE RELIABLE AND HIGHEST QUALITY RODS.

WIRELINE TİJLER/WIRELINE RODS



	DIŞ ÇAP OUTER DIAMETER	İÇ ÇAP INNER DIAMETER	ISIL İŞLEMSİZ		ISIL İŞLEMLİ	
			REGULAR 1.5M.	REGULAR 3m.	HEAT TREATED 1.5m.	HEAT TREATED 3m.
A-WL	44.5	34.9	AWLRG15M	AWLRG3M	AWLHT15M	AWLHT3M
B-WL	55.6	46	BWLRG15M	BWLRG3M	BWLHT15M	BWLHT3M
N-WL	69.9	60.3	NWLRG15M	NWLRG3M	NWLHT15M	NWLHT3M
H-WL	88.9	77.8	HWLRG15M	HWLRG3M	HWLHT15M	HWLHT3M
P-WL	114.3	101.6	PWLRG15M	PWLRG3M	PWLHT15M	PWLHT3M

KONVANSİYONEL TİJLER

BESSON DCDMA STANDARTI TİJLERİ,YAYGIN ADIYLA DÜZ TAKIM TİJLERİ,İKİ TARAFINA CNC MAKİNALARIYLA DIŞ AÇILAN TÜPÜN YÜKSEK KALİTEDEKİ MANŞONLA BİRLEŞTİRİLMESİYLE İMAL EDİLMEKTEDİR.KULLANILAN MANŞONUN DIŞ PROFİLİNE GÖRE W VEYA WJ ŞEKLİNDE ADLANDIRILMAKTADIRLAR."A" ÇAPTAN,"N" ÇAPA KADAR İMAL EDİLEN DÜZ TAKIM TİJLERİ STANDART OLARAK BOYLARI 3 METRE VEYA 1,5 METRE OLARAK İMAL EDİLMEKTEDİR. ANCAK İSTEĞE GÖRE 1 METRE,0,75METRE VEYA 0,5 METRE OLARAK DA İMAL EDİLİR

CONVANTIONAL RODS

BESSON DCDMA RODS, WIDELY KNOWN AS CONVENTIONAL RODS,ARE MANUFACTURED BY OPENING BOX THREADS AT THE END OF BOTH ENDS VIA CNC LATHE MACHINES AND CONNECTION OF THREADED RODS WITH HIGH QUALITY COUPLINGS. RODS MAY BE CALLED AS "W" OR "WJ" ACCORDING TO COUPLING'S THREAD PROFILE.CONVENTIONAL RODS ARE MANUFACTURED FROM "A" SIZE UP TO " N" SIZE IN 3 AND 1.5 METERS,HOWEVER THESE RODS MAY ALSO BE MANUFACTURED 1 METERS,0,75 OR 0,5 METERS IN ORDER TO MEET SPECIFIC DEMANDS.

KONVANSİYONEL TİJLER/CONVENTIONAL RODS



	DiŞ ÇAP	İÇ ÇAP	SICAK PRES+KAYNAK	
	OUTER DIAMETER	INNER DIAMETER	HOT PRESS+WELDED 1.5m.	3m.
AW	44.0	30.9	AWR15M	AWR3M
BW	54.0	39.0	BWR15M	BWR3M
NW	66.7	57.2	NWR15M	NWR3M



	DiŞ ÇAP	İÇ ÇAP	SICAK PRES+KAYNAK	
	OUTER DIAMETER	INNER DIAMETER	HOT PRESS+WELDED 1.5m.	3m.
AWJ	44.0	30.9	AWJR15M	AWJR3M
BWJ	54.0	39.0	BWJR15M	BWJR3M
NWJ	66.7	57.2	NWJ15M	NWJR3M

MUHAFAZA BORULARI

TAKIM DİZİSİNİN GÜVENLİ ÇALIŞMASININ VE SU KAÇAKLARINI ÖNLEMELİKİ ÇİN KULLANILAN BESSON MUHAFAZA BORULARI DCDMA STANDARINA UYGUN OLARAK, YÜKSEK KALİTEDEKİ SOĞUK ÇEKME DİKİŞSİZ ÇELİK BORUDAN, CNC MAKİNALARDA ERKEK VE DİŞİ DİŞ AÇILMASIYLA ELDE EDİLMEKTEDİR. "A" ÇAPTA, "P" ÇAPA KADAR İMAL EDİLEN BESSON MUHAFAZA BORULARI STANDART OLARAK 3 METRE VE 1.5 METRE OLARAK ÜRETİLMEKTEDİR. ANCAK İSTEĞE GÖRE 1 METRE, 0,75 METRE VEYA 0,5 METRE OLARAK DA ÜRETİLİR.

CASINGS

BESSON CASINGS ARE MANUFACTURED FROM HIGH QUALITY COLD DRAWN SEAMLESS STEEL TUBES BY OPENING BOX AND PIN THREADS AT THE END OF THE TUBE VIA CNC LATHE MACHINES ACCORDING TO DCDMA STANDART, FOR OBTAINING A HEALTHY ENVIROMENT FOR DRILLING AND PREVENTING WATER LOSS. CASINGS ARE PRODUCED FROM "A" SIZE TO "P" SIZE IN 3 AND 1,5 METERS. HOWEVER CASINGS MAY ALSO BE MANUFACTURED 1 METERS, 0,75 OR 0,5 METERS IN ORDER TO MEET SPECIFIC DEMANDS.



	DIŞ ÇAP	İÇ ÇAP	ISIL İŞLEMSİZ	
	OUTER DIAMETER	INNER DIAMETER	REGULAR 1.5m.	REGULAR 3m.
AW	57.1	48.4	AWCR15M	AWCR3M
BW	73.0	60.3	BWCR15M	BWCR3M
NW	88.9	76.2	NWCR15M	NWCR3M
HW	114.3	101.6	HWCR15M	HWCR3M
PW	139.7	127.0	PWCR15M	PWCR3M

ELMAS ÜRÜNLER

BESSON ELMASLI ÜRÜNLERİ AAA SERTİFKALI SENTETİK ELMASLAR VEYA DOĞAL ELMASLAR KULLANILARAK, ATMOSFER KONTROLLU SİNERLEME FIRINLARINDA İMAL EDİLMEKTEDİR. BESSON ELMASLI ÜRÜNLERİ ZEMİNİN YAPISI VE MİNERALIN CİNSİNE GÖRE EMPRENYE VEYA TANELİ ELMAS MATKAP OLARAK HAZIRLANMAKTA DİR.

DIAMOND PRODUCTS

BESSON DIAMOND PRODUCTS IN WHICH AAA QUALITY SYNTHETIC OR NATURAL DIAMONDS USED, ARE MANUFACTURED IN ATMOSPHERIC-CONTROLLED SINTERING MACHINES. DIAMOND PRODUCTS ARE MANUFACTURED AS IMPREGNATED OR SURFACE SET DIAMOND BITS ACCORDING TO FORMATION AND COMPOSITION.



EMPRENYE MATKAPLAR/IMPREGNATED DIAMOND BITS

FARKLI BOYUTLARDA SENTETİK ELMASLAR KULLANILAN BESSON EMPRENYE ELMAS MATKAPLARI, FARKLI SU KANALI DİZAYNLARI VE MATRİKS YÜKSEKLİKLERİYLE DELİNMESİ EN GÜÇ FORMASYONLARDA DAHI YÜKSEK PERFORMANS SAĞLAMAKTADIR.

BESSON IMPREGNATED DIAMOND BITS,IN WHICH DIFFERENT SIZE SYNTHETIC DIAMONDS USED,PROVIDE A GOOD PENETRATION PERFORMANCE EVEN IN FORMATIONS THAT IS VERY HARD TO DRILL BECAUSE OF BITS' MATRIX HEIGHT AND WATER CHANNEL DESIGN.

TANELİ ELMAS MATKAPLAR/SURFACE SET DIAMOND BITS

AAA KALİTE 25-40,40-60 VE 60-80 SPC DOĞAL ELMAS KULLANILARAK ÜRETİLEN BESSON TANELİ ELMASLARI,ELMAS TANELERİNİN YERLEŞTİRİLMİŞ DİZAYNI SAYESİNDE ARZU EDİLEN DELGİ KOŞULLARINI SAĞLAMAKTADIR.

BESSON SURFACE SET DIAMOND BITS,IN WHICH AAA QUALITY NATURAL DIAMONDS IN 25-40,40-60 AND 60-80 SPC ARE USED,MEET DESIRED DRILLING CONDITIONS DUE TO THE SETTLEMENT DESIGN OF DIAMONDS IN BITS' MOLD

BESSON SERIES SELECTIN GUIDE				
ROCK CONDITION	ROCK TYPE	BESSON REGULAR SERIE (9 MM)	BESSON RECON SERIE(12 MM)	BESSON ULTRA SERIE(15 MM)
HIGHLY-ABRASIVE, SOFT FORMATIONS	CALSITE, LIMESTONE, SANDSTONE, TALC	1	1	1
		2		
ABRASIVE BROKEN COMPETENT	ANDESITE, DOLOMITE, SHLE, SERPENTINITE, GRANITE	3	2	2
		4		
MEDIUM ABRASIVE MEDIUMHARD BROKEN OR MASSIVE	GABBRO,DIORITE, HEMATITE,BASALT	5	3	2
		6		
LOW-ABRASIVE HARD AND VERY HARD	GNESIS, PEGMATITE, QUARTZ	7	4	3
		8		
NON-ABRASIVE EXTREMELY HARD	CHERT, IRONSTONE, JASPERITE	9	5	3
		10		

ELMASLI PORTKRONLAR/DIAMOND REAMING SHELL

SONDAJ DİZİSİNİN RAHAT İLERLEMESİNİ SAĞLAYAN, MATKABIN ÇALIŞMA PERFORMANSINI ARTTIRIP, ÖMRÜNÜ UZATAN BESSON ELMASLI PORTKRONLARI, DOĞAL ELMAS, SENTETİK ELMAS VE TUNGSTEN CARBİDE TAKVİYELER KULLANILARAK İMAL EDİLMEKTEDİR. STANDART MATRİKS BOYLARI 35 MM OLAN BESSON ELMASLI PORTKRONLARI İSTEĞE GÖRE YÜKSELTİLMEKTEDİR.

SYNTHETIC DIAMONDS, NATURAL DIAMONDS AND TUNGSTEN CARBIDE REINFORCEMENTS ARE USED IN PRODUCTION OF BESSON DIAMOND REAMING SHELLS IN ORDER TO PREVENT STUCK OF DRILL STRINGS, INCREASE THE PENETRATION PERFORMANCE AND LIFE OF BIT. STANDART MATRIX HEIGHT OF REAMING SHELLS ARE 35 MM THAT CAN BE SHIFTED IN FOR MEETING DRILLING OPERATION DEMANDS.



ELMASLI ÇARIKLAR/DIAMOND CASING SHOES

TAKIM DİZİSİNİN KORUNMASI İÇİN KULLANILAN MUHAFAZA BORULARI İÇİN İMAL EDİLEN BESSON ELMASLI ÇARIKLARI, KULLANILAN ELMAS KALİTESİ VE FIRINLANMA TEKNOLOJİSİ SAYESİNDE RAHAT İLERLEME SAĞLAMAKTADIR.

BESSON CASING SHOES, USED FOR CASINGS THAT SUPPORT DRILL STRING, PROVIDE HEALTHY DRILL CONDITIONS DUE TO DIAMOND QUALITY AND SIZE USED IN IT AND SINTERRING TECHNOLOGY.



BESSON VİDYELİ ÜRÜNLER İÇERİĞİNDE KULLANILAN ŞOK STRESE VE YÜKSEK ISIYA DİRENÇLİ TUNGSTEN CARBİDE KESİCİLER SAYESİNDE, TALEP EDİLEN İYİ DELME KOŞULLARINI KARŞILAMAKTADIR. VİDYELİ ÜRÜNLER VİDYELİ MATKAPLAR, VİDYELİ PORTKRONLAR, VİDYELİ ZIRHLAR VE VİDYELİ ÇARIKLARI İÇERMEKTEDİR.

BESSON TUNGSTEN CARBIDE PRODUCTS MEETS THE DEMANDS OF CONDITIONS OF HIGH DRILLING PERFORMANCE DUE TO THE FACT THAT TUNGSTEN CARBIDE CUTTERS, HAVING HIGH RESISTANCE TO YIELD, TENSILE STRESS AND HIGH TEMPERATURE, ARE USED IN PRODUCTION. TUNGSTEN CARBIDE PRODUCTS INCLUDE TUNGSTEN CARBIDE BITS, TUNGSTEN CARBIDE REAMING SHELLS, TUNGSTEN CARBIDE LOCKING COUPLINGS AND TUNGSTEN CARBIDE CASING SHOES

YARDIMCI EKİPMANLAR/DRILLING ACCESORIES

BESSON SU BAŞLIKLARI, MANEVRA BAŞLIKLARI, TAHLİSİYELERİ, KAROTİYER İÇ VE DIŞ TÜP ANAHTARLARI VE ADAPTORLER YÜKSEK KALİTEDEKİ ÇELİKLERDEN İMAL EDİLMEKTE VE ISIL İŞLEMENDE GEÇMEKTE VE EN ZOR KOŞULLARDA DAHİ ARZU EDİLEN SONUCU VERMEKTEDİR

BESSON WATER SWIVELS, HOISTING PLUGS, RECOVERY TAPS, INNER AND OUTER TUBE WRENCHES AND ADAPTOR SUBS ARE MADE OF HIGH QUALITY STEELS WITH HEAD INDUCTION FOR ASSURE PRODUCTIVE DRILLING

ZEMİN ETÜD EKİPMANLARI/SOIL INVESTIGATION TOOLS

SPT, ŞAHMERDAN, SHELBY TÜPLERİ, DARBE BAŞLIĞI VE PAKER GİBİ ZEMİN ETÜDÜNDE KULLANILAN EKİPMANLAR BESSON MARKASIYLA ÜRETİLMEKTEDİR

SPT, SPT HAMMER, SHELBY TUBE SAMPLER AND ACCESSORIES AND PACKERS ARE MANUFACTURED UNDER BRAND NAME BESSON.

SERTİFİKA

*İşbu Sertifika ile aşağıda ismi belirtilen firmanın,
Kalite Yönetim Sistemi*

BES MÜHENDİSLİK MÜŞAVİRLİK TİC.LTD.ŞTİ.

İVEDİK ORGANİZE SANAYİ BÖLGESİ ÖZPETEK SANAYİ SİTESİ
1378 SOK.NO:10 OSTİM/ANKARA

Bağımsız olarak denetlenmiş ve aşağıda detayları belirtilen standardın gerekliliklerini karşıladığı görülmüştür.

ISO 9001:2008

Bu sertifika aşağıda belirtilen ürün ve/veya hizmetleri kapsamaktadır.

Sondaj malzemeleri imalatı ve satışı

:: Sertifika No:: 203290-A01

İlk Belgelendirme Tarihi	08 Ekim 2013
Gözetim Denetimi Tarihi	04 Ekim 2014
Sertifikanın Geçerlilik Süresi	04 Ekim 2014
Yeniden Belgelendirme Tarihi	03 Ekim 2016

Bu sertifika LMS Certifications'a ait ve gözetim denetimlerinde yıllık sağlığına devam eder.

[Signature]
Director

LMS Certifications Private Limited
e-mail : info@lmscert.com, www.lmscert.com

IAS-ANZ
MEMBER OF MULTILATERAL
IAF
RECOGNITION ARRANGEMENT

M46402101L

To verify this certificate status & details kindly log on www.ias-anz.com.au/register

Certificate of Registration

*This is to Certify that the
Quality Management System
of*

BES MÜHENDİSLİK MÜŞAVİRLİK TİC.LTD.ŞTİ.

İVEDİK ORGANİZE SANAYİ BÖLGESİ ÖZPETEK SANAYİ SİTESİ
1378 SOK.NO:10 OSTİM/ANKARA

has been independently assessed and is compliant with the requirements of

ISO 9001:2008

This Certificate is applicable to the following product or service ranges:

Manufacture and sale of drilling equipments

:: Certificate No:: 203290-A01

Date of initial registration	08 October 2013
Surveillance audit on or before	04 October 2014
Certificate expiry	04 October 2014
Recertification Due	03 October 2016

This certificate is property of LMS Certifications and remains valid subject to satisfactory annual surveillance audits.

[Signature]
Director

LMS Certifications Private Limited
e-mail : info@lmscert.com, www.lmscert.com

IAS-ANZ
MEMBER OF MULTILATERAL
IAF
RECOGNITION ARRANGEMENT

M46402101L

To verify this certificate status & details kindly log on www.ias-anz.com.au/register

BESSON®

BESSON®

